

NOUVA

CAPABILITY STATEMENT

COMPANY DETAILS

Company Name: Nouva Group Pty Ltd
ABN: 79 611 174 264
Address: 14 Prince William Drive
Seven Hills NSW 2147
Telephone: 02 8678 0110
Email: info@nouva.com.au
Web: www.nouva.com.au

PRIMARY CONTACT

Name: Andrew Smuc
Position: General Manager
Mobile: 0419 215 171
Email: andrew@nouva.com.au



COMPANY PROFILE

Nouva Group specialize in the manufacture and installation of custom architectural detailed joinery.

Our new manufacturing facility boasts sophisticated machinery and the latest technology. We have the capability and capacity to undertake joinery projects to the value of \$100K–\$1M.

We undertake work throughout the Greater Sydney Metropolitan area, outer Sydney Regions and interstate.

Nouva Group complies with Work Health and Safety Act 2011 No 10. Our focus is on delivering projects in a safe manner, while remaining on time and within budget. We strive to exceed the quality expectation of our clients.

With an outstanding reputation for delivering high-quality workmanship and excellent customer service, we take pride in our ability to consistently produce superior results.

Nouva Group provides our clients with peace of mind through communication and liaison with our dedicated office team, whether with our design manager, estimator or procurement officer. Our project managers, joiners, French polishers and site installers are all committed to providing the best product possible.

Whether you need a one-off item or a full joinery package, we ensure all processes are met and expectations exceeded throughout all phases of work.

Our non-compromising approach is a factor that sets Nouva Group apart from other companies.

INDUSTRY SECTORS

We specialise in Custom Architectural Joinery & Furniture, servicing business sectors including: -

- Commercial
- Retail
- Medical & Dental
- Educational & Childcare
- Hospitality
- Government
- Residential

SERVICES

Nouva Group provide a wide range of in-house services which include:

- Drafting – Our own full-time drafting team works in accordance to the initial design drawings provided. We also provide an optimised solution where necessary
- Manufacturing – Custom Architectural Detailed Joinery including kitchens, reception desks, office joinery, built-in storage & cupboard units, boardroom tables, credenzas, free standing furniture and banquette seating
- Spray booth – In-house polyurethane finish, colour backed glass and French Polishing
- Installation – All our installers are our own staff and are involved in the project from the beginning and until completed installation
- Project Management – Strong project management structure / support and systems in place
- Project Co-ordination – Skilled staff available with strong design knowledge around the joinery and cabinet making industry

FACILITIES

Nouva Group new head office located at 14 Prince William Drive Seven Hills comprises: -

- Office Space – 150m²
- Factory Area – 800m² including new spray booth
- Staff Amenities

EQUIPMENT

Nouva Group manufacturing equipment includes: -

- Biesse Rover B 4.40 FTK CNC Machine – 3600 x 1200 Flatbed
- Biesse Akron 246 Edge bander
- Casolin Astra 400 panel saw
- Yokistar industrial paint booth

SOFTWARE / SYSTEMS

Nouva Group utilises the following software: -

- Microsoft Windows 10 - Operating Systems
- Microsoft Office
- Cabinet Vision Ultimate – Design and Manufacturing Software (Ver 9)
- Xero: Accounting Software & Online Bookkeeping





KEY PERSONNEL



TIM GEORGES

Managing Director / Project Manager

- 16 years industry experience
- Site Manager with Tier 2 builders (FDC & Built) undertaking supervision of projects, programming, coordination of sub-contractors, procurement of materials and client liaison
- Experience working on high end, multi-million dollar retail and commercial projects
- Joinery Research & Development
- Nouva Group WH&S Representative
- Site Quality Assurance
- Member of (FIAA) Furnishing Industry Association of Australia



ELIAS GEORGES

Managing Director / Project Manager

- 14 years industry experience
- Cabinet maker and joiner
- Cert IV Qualifications in shop fitting and joinery
- Previous experience as Site Manager with joinery companies serving commercial, retail and residential customers (including supervision of projects, programming, coordination of sub-contractors, procurement of materials and client liaison)
- General Manager of joinery company



ANDREW SMUC

General Manager

- 40 years industry experience
- Construction Manager (including preparation of tender submissions, estimating, supervision of projects, programming of works (MS Project), site inspections, dilapidation reports, coordination of sub-contractors, procurement of materials and client liaison)
- Director In-Charge of Stadium Overlay (Stadia) Sydney 2000 Olympics & Paralympics
- Senior Project Manager responsible for co-ordination of the design and fitout of Stadium Australia for the Sydney 2000 Olympic Games
- Previous Owner and Director of In-Build Pty Ltd
- Previous Manager of Kann Finch Projects
- Architectural Draftsperson & Technician
- Contracts Administrator
- Member of (MBA) Master Builders Association



PIERS LAVENDER

Design Manager

- 8 years industry experience
- Trained in multiple CAD programs including: -
 - Cabinet Vision
 - AutoCAD
 - Revit
 - Inventor
- Cert IV Qualifications in manufacturing technologies
- Previous experience managing medium company including: -
 - Quality Assurance Management
 - Production Manager
 - Purchasing
 - Implement and manage job management system
 - Implement company standards
- Experience in high end residential and commercial projects



MARIO DA SILVA

Factory Supervisor

- 20 years industry experience
- Previous experience with joinery and furniture manufacturing companies serving commercial, retail exhibition customers. Roles and achievements including: -
 - Site coordinator of installations including national projects
 - Storeroom Manager
 - Machine shop Supervisor
 - Factory Production Manager
 - Purchasing and procurement
- Trained in operations of factory equipment including: -
 - Beam Saw
 - Nesting Machine
 - Edge bander
 - Panel Saw





H&T 華信

PROJECT SHOWCASE

CYCLO GROUP

- Wollongong Medical Centre
- Queensford College Parramatta
- Harold Park Medical Centre – Tramsheds Harold Park
- Petbarn Stores - McEvoy Street Alexandria & Bayswater
- Thrive Early Learning Centre – Coniston
- Warrawong Accident & Medical Centre

BLUE GROUP PROJECTS

- Nubo - Bourke Road Alexandria
- Mirvac Display Suite Marrickville
- Mirvac Offices – Tramsheds Harold Park
- Barnardo's Australia – Ultimo
- FTS Group – Sydney CBD
- W Dental - Woollahra

IN BUILD HOLDINGS

- Riverstone Medical Centre
- Ray White Blackheath
- Ecco Shoes – Chatswood, Bondi Junction & Doncaster (VIC)

CONSTRUCTION BY DESIGN

- Roger David – Various Sydney & Melbourne Stores
- Passiontree Velvet - St Ives
- Toymate – Warriewood, Chatswood and Mt. Druitt

REDWOOD PROJECTS

- Smith & Nephew – North Ryde
- Montessori Childcare Centre - Gymea
- Little Learning School Child Care Centres – Caringbah, Leichhardt and Panania

GLEZCORP CONTRACTING

- Gemtec Jewellery (offices & display suite) – Sydney CBD

VERTEX

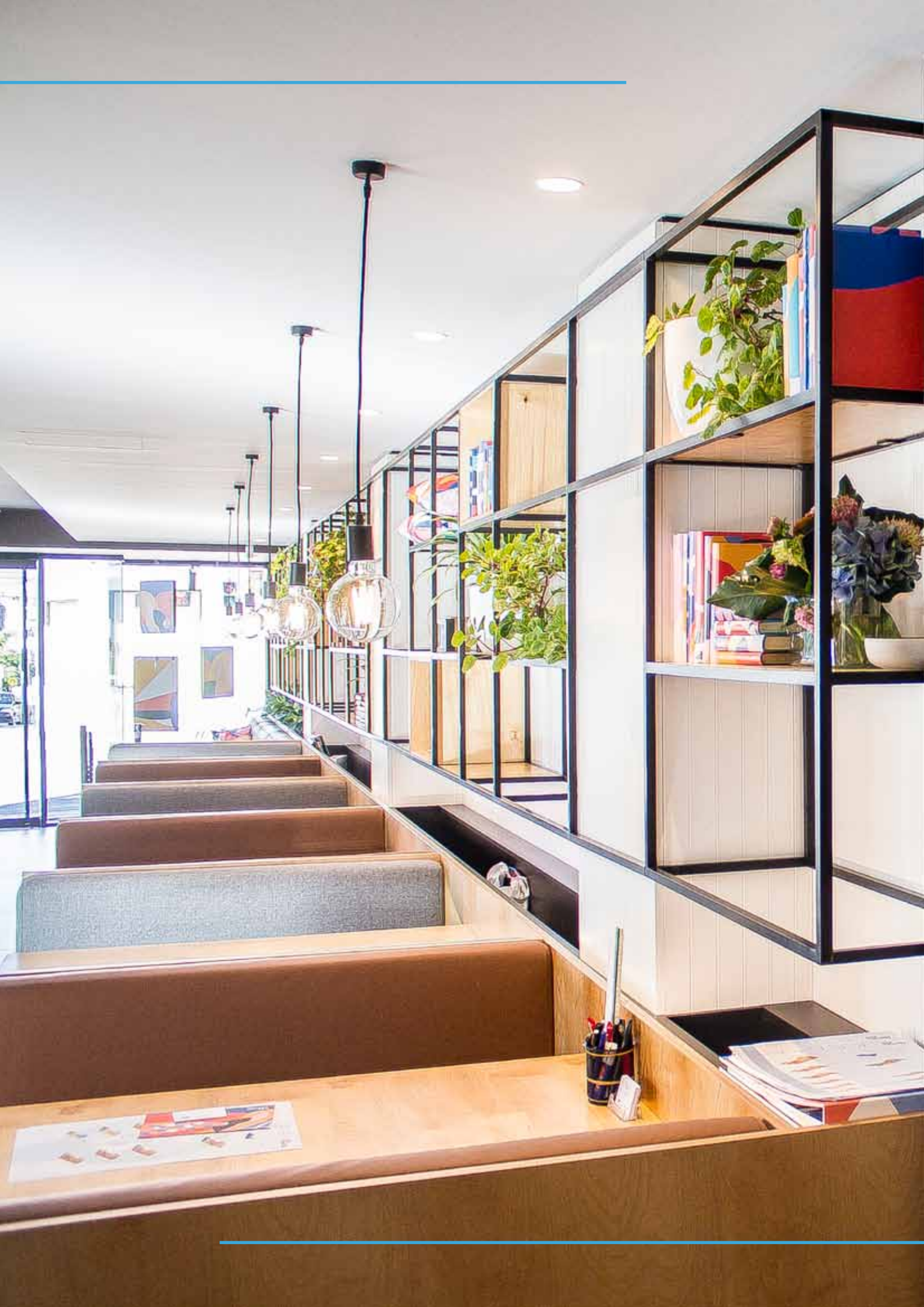
- Ticketek Head Office – Westfield Sydney
- Amara Living (Display Suite) - Alexandria

KEY CLIENT LIST*

- Blue Group Projects
- CODA Commercial Interiors
- Construction By Design
- Cyclo Group
- Every Trade Building Services
- Haviland Architects
- HP Building Group Pty Ltd
- In-Build Holdings
- InOne Projects
- NuVision Projects
- Redwood Projects
- UGG Australia
- Vertex Projects

* Representative client list only





QUALITY ASSURANCE

Quality control through consistent monitoring, supervision and surveillance is conducted on all our projects to ensure compliance with procedures and conformance to Australian Standards, Codes and specifications.

High quality on our projects are enforced by our constant monitoring throughout the manufacturing process.

WORKPLACE HEALTH AND SAFETY

The safety of our staff and others on site, are our number one priority. We run a comprehensive program of safety training ranging from safety workshops to safety management on a regular basis.

We pride ourselves in providing our workforce with the highest quality equipment available to complete all our projects safely. We have introduced systems into our company which eliminates safety hazards such as trips and falls, manual handling and alike; they all provide excellent safety features.

INSURANCE COVERAGE

- Business Insurance
- Comprehensive Motor Vehicle Insurance
- Public Liability Insurance (\$20M)
- Products Liability Insurance (\$20M)
- Workers Compensation

NOUVA

Nouva Group Pty Ltd

ABN 79 611 174 264

Address 14 Prince William Drive
Seven Hills NSW 2147

Telephone 02 8678 0110

Email info@nouva.com.au

Web www.nouva.com.au